

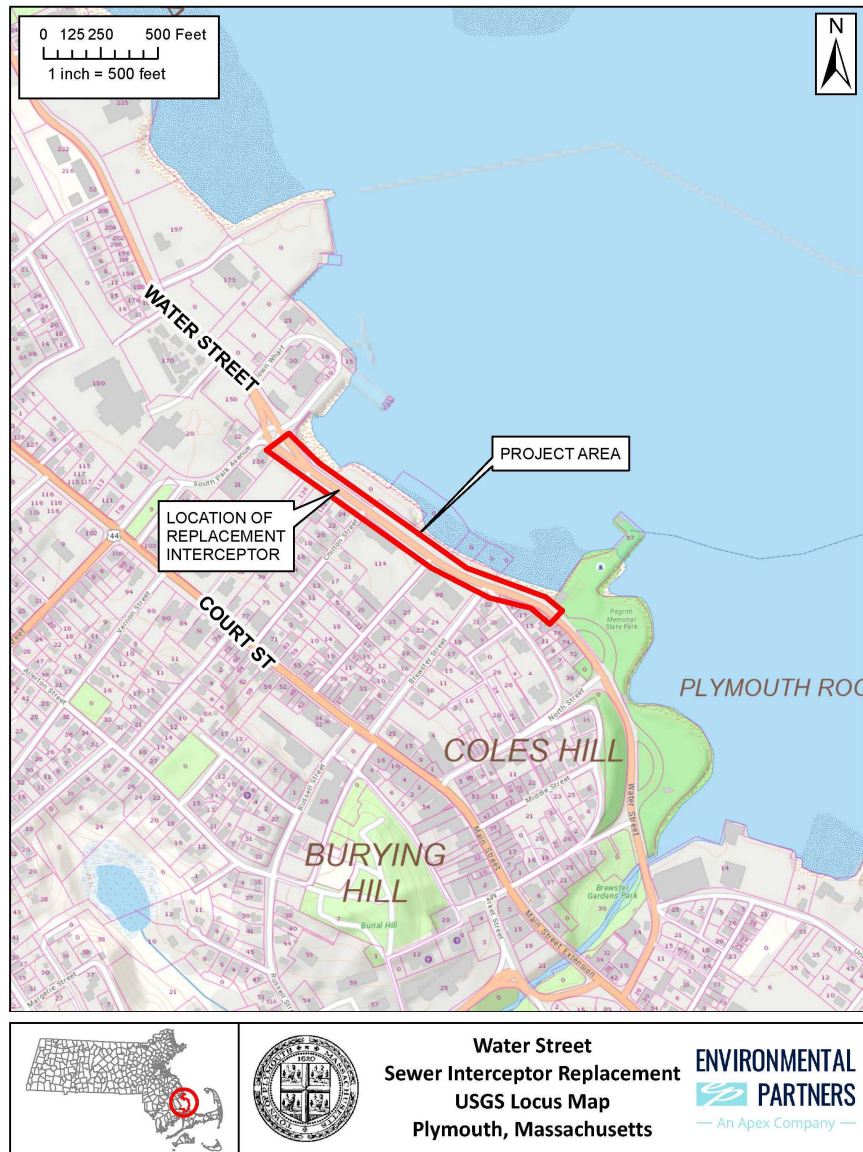
An aerial photograph of a coastal town, likely Plymouth, MA. The image shows a mix of residential and commercial buildings, a large parking lot, and a harbor with several boats docked at a pier. The water is a deep blue, and the sky is clear.

# WATER STREET INTERCEPTOR REPLACEMENT PROJECT

Public Outreach Meeting  
Plymouth, MA  
November 10, 2022

ENVIRONMENTAL  
 PARTNERS  
— An Apex Company —

# PROJECT AREA MAP



## PROJECT BACKGROUND/OVERVIEW

- Original Sewer Interceptor built in 1969
- Because of (2) 45 degree bends, CCTV pipe assessment is impossible - condition of pipe in harbor is unknown
- **Goal:** To replace the 30-inch, gravity sewer interceptor from the harbor to within Water Street
- Abandon pipe and manholes in the harbor
- 2014 design and construction halted due to construction difficulties
- Project suspended
- Emergency repairs completed in 2015

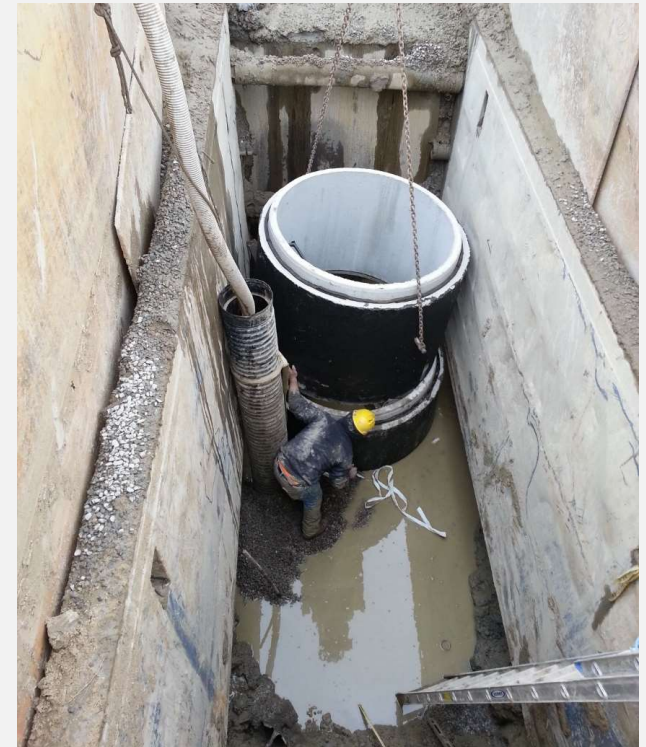


## 2014 INITIAL INSTALLATION

- Grove Construction was the hired contractor
- Higher groundwater levels than anticipated and tidal influence
- Lack of meaningful dewatering
- Construction fatigue
- Sewer manhole #581 settled more than 18 inches
- Project suspended in 2014



2014 Installation: Pumped Water and Sediment from Construction Activities into Harbor



2014 Installation: Groundwater Rising to Surface During Manhole Installation

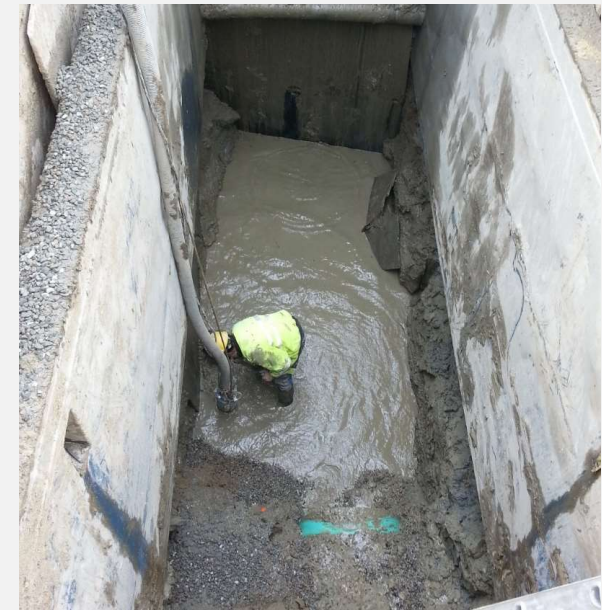


## PROJECT HURDLES AND COMPLICATIONS

- Combination of high groundwater levels and high pressure due to groundwater confined between layers of clay and tidal influence
- This causes a surge of water to the surface when digging within groundwater elevations
- Dewatering is difficult, requires specialty contractor
- Potential settling of structures over time
- Construction fatigue can occur



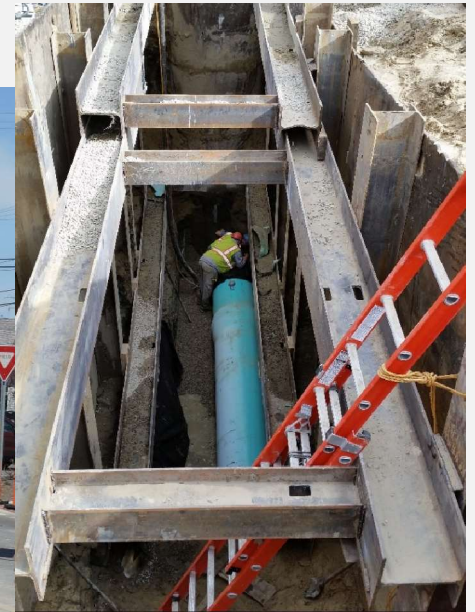
Groundwater seeping up through pavement



2014 Manhole #581 Install

## 2015 REPAIRS

- EP performed a high-level assessment of groundwater levels and subsurface conditions
- Installed vibrating water pizometers
- Removed manhole that had settled >18 inches since installation
- Replaced with deep sewer manhole
- Project incomplete (lack of funding and construction fatigue)



← Proper Installation  
of Interceptor and  
Sewer Manhole

# TRAFFIC MANAGEMENT PLANS







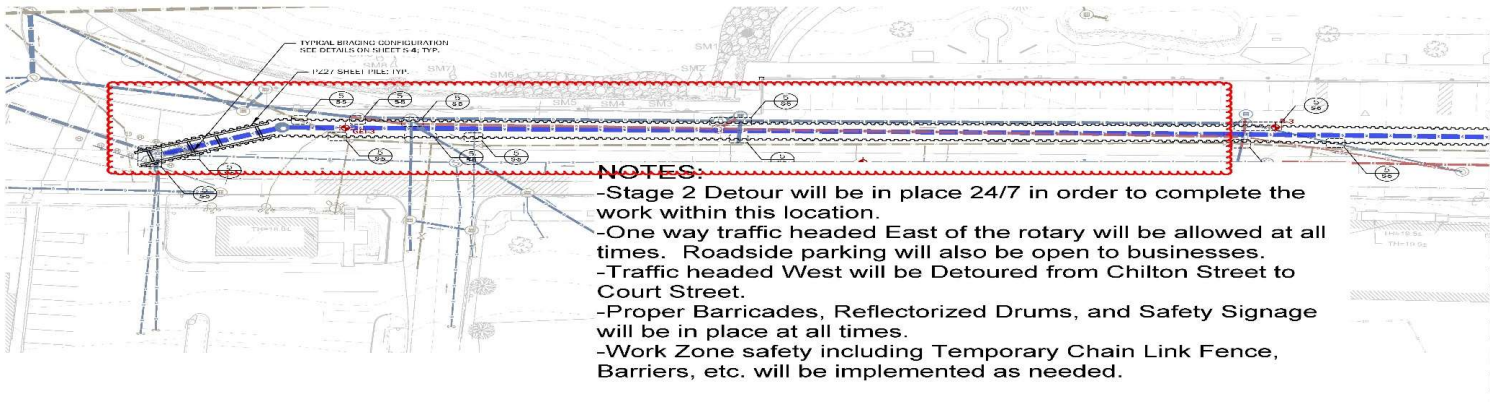
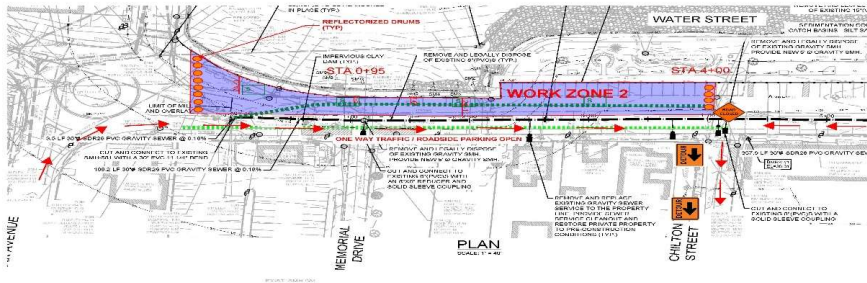
# ZONE 2



ENVIRONMENTAL  
PARTNERS  
An Apex Company



## NCS 2215 \_Plymouth Water Street Sewer Interceptor Replacement PROPOSED LAYOUT PLANS STA.0+95 to 4+00 WORK ZONE NO. 2



- NOTES:**
- Stage 2 Detour will be in place 24/7 in order to complete the work within this location.
  - One way traffic headed East of the rotary will be allowed at all times. Roadside parking will also be open to businesses.
  - Traffic headed West will be Detoured from Chilton Street to Court Street.
  - Proper Barricades, Reflectorized Drums, and Safety Signage will be in place at all times.
  - Work Zone safety including Temporary Chain Link Fence, Barriers, etc. will be implemented as needed.

- LEGEND**
- NEW 30\"/>
- LITHOLOGY KEY**
- FILL
  - 6\"/>

# ZONE 3

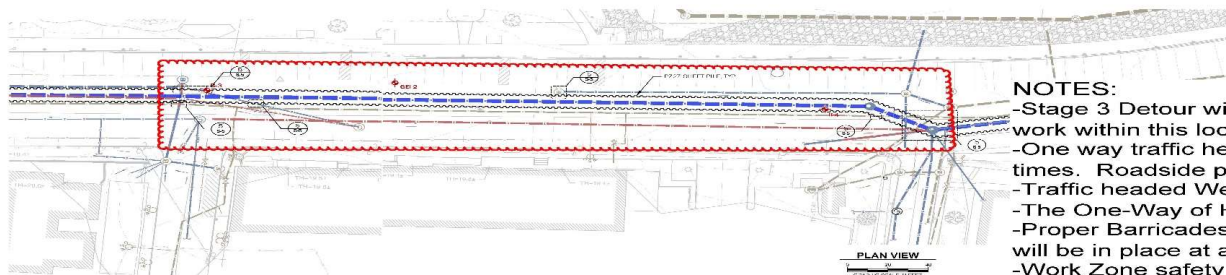
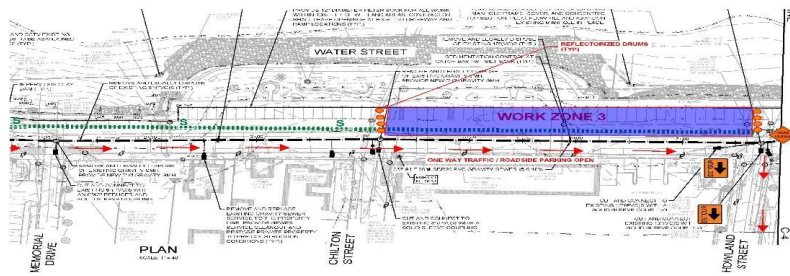


ENVIRONMENTAL  
PARTNERS  
— An Apex Company —

## NCS 2215 \_Plymouth Water Street Sewer Interceptor Replacement

PROPOSED LAYOUT PLANS STA 4+00 to 7+50

### WORK ZONE NO. 3



#### NOTES:

- Stage 3 Detour will be in place 24/7 in order to complete the work within this location.
- One way traffic headed East of the rotary will be allowed at all times. Roadside parking will also be open to businesses.
- Traffic headed West will be Detoured.
- The One-Way of Howland Street will be temporarily reversed.
- Proper Barricades, Reflectorized Drums, and Safety Signage will be in place at all times.
- Work Zone safety including Temporary Chain Link Fence, Barriers, etc. will be implemented as needed.



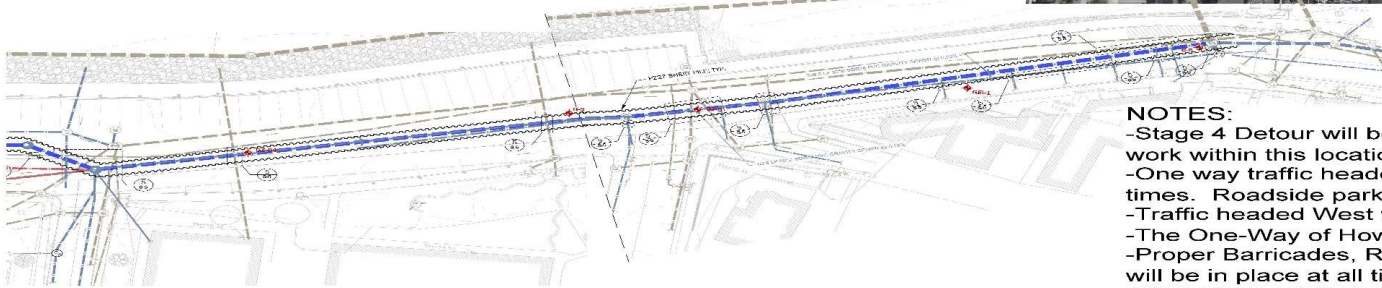
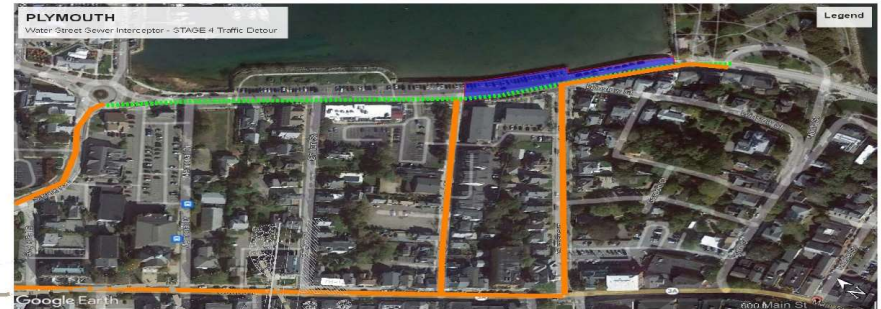
# ZONE 4



ENVIRONMENTAL  
PARTNERS  
— An Apex Company —



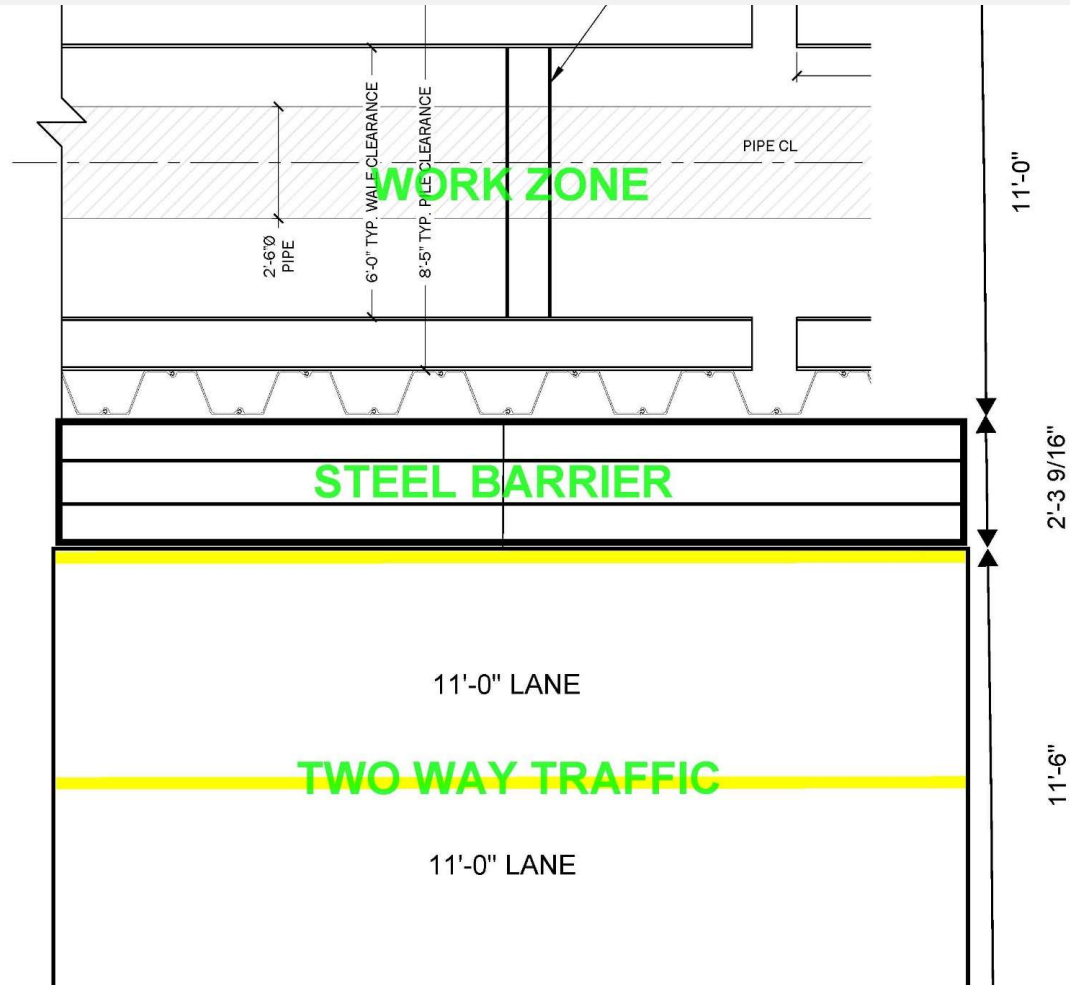
## NCS 2215 \_Plymouth Water Street Sewer Interceptor Replacement PROPOSED LAYOUT PLANS STA 7+50 to WORK ZONE NO. 4



### NOTES:

- Stage 4 Detour will be in place 24/7 in order to complete the work within this location.
- One way traffic headed East of the rotary will be allowed at all times. Roadside parking will also be open to businesses.
- Traffic headed West will be Detoured.
- The One-Way of Howland Street will be temporarily reversed.
- Proper Barricades, Reflectorized Drums, and Safety Signage will be in place at all times.
- Work Zone safety including Temporary Chain Link Fence, Barriers, etc. will be implemented as needed.

## TYP. TRENCH DETAIL





# SCHEDULE

## Anticipated Project Schedule

Task	Date
Mobilize/Begin Construction	December 2022
Completion of Pipe Installation & Commissioning	5/27/2023 (Friday before Memorial Day)
Completion of Permanent Trench Paving & Final Mill/Overlay	11/15/2023

# SCHEDULE

Display: Daily

Week: 10

Week: 10

Overdue: No

[illegible]

THANK YOU

ENVIRONMENTAL  
 PARTNERS