

Town of Plymouth
Massachusetts
Official Zoning Map
Sheet 2 of 2
Adopted 2012 Fall Annual Town Meeting Article 25

DUXBURY

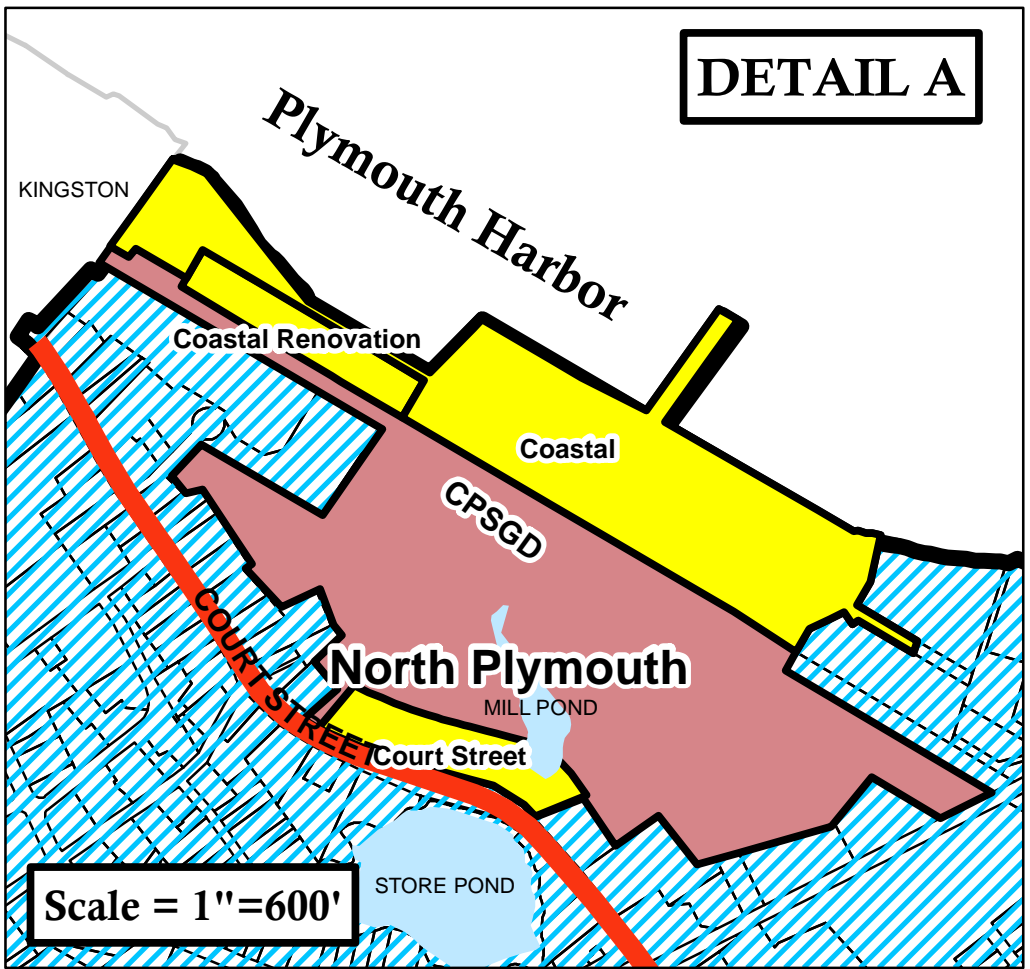
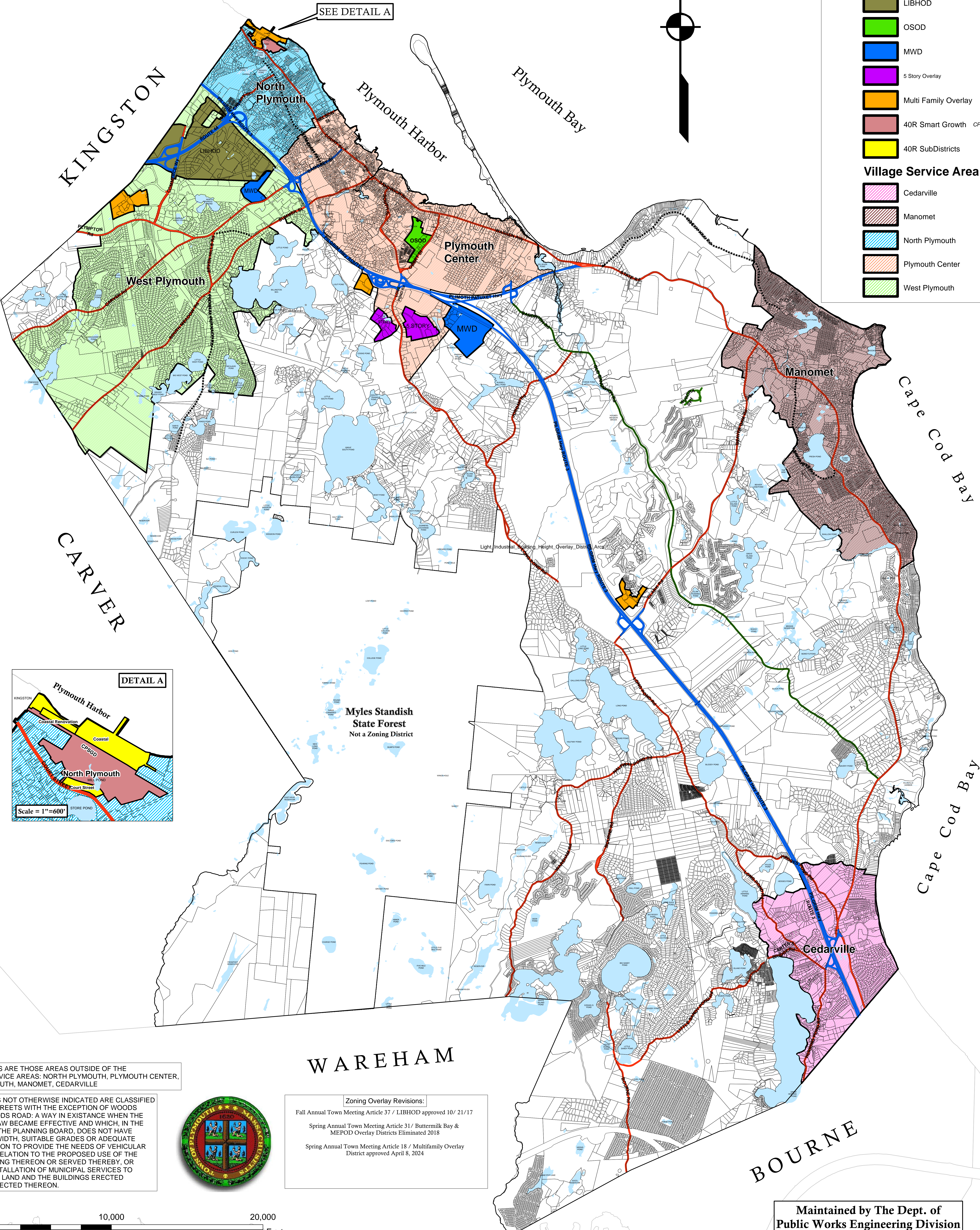
Plymouth

Zoning Overlays
and
Street Classifications

- Collector Street
- Limited Access
- Major Street
- Scenic Street
- LIBHOD
- OSOD
- MWD
- 5 Story Overlay
- Multi Family Overlay
- 40R Smart Growth CPSGD
- 40R SubDistricts

Village Service Area

- Cedarville
- Manomet
- North Plymouth
- Plymouth Center
- West Plymouth



RURAL AREAS ARE THOSE AREAS OUTSIDE OF THE VILLAGE SERVICE AREAS: NORTH PLYMOUTH, PLYMOUTH CENTER, WEST PLYMOUTH, MANOMET, CEDARVILLE

ALL STREETS NOT OTHERWISE INDICATED ARE CLASSIFIED AS MINOR STREETS WITH THE EXCEPTION OF WOODS ROADS. WOODS ROAD: A WAY IN EXISTENCE WHEN THE ZONING BYLAW BECAME EFFECTIVE AND WHICH, IN THE OPINION OF THE PLANNING BOARD, DOES NOT HAVE SUFFICIENT WIDTH, SUITABLE GRADES OR ADEQUATE CONSTRUCTION TO PROVIDE THE NEEDS OF VEHICULAR TRAFFIC IN RELATION TO THE PROPOSED USE OF THE LAND ADJUTING THEREON OR SERVED THEREBY, OR FOR THE INSTALLATION OF MUNICIPAL SERVICES TO SERVE SUCH LAND AND THE BUILDINGS ERECTED OR TO BE ERECTED THEREON.



WAREHAM

Zoning Overlay Revisions:

- Fall Annual Town Meeting Article 37 / LIBHOD approved 10/ 21/17
- Spring Annual Town Meeting Article 31/ Buttermilk Bay & MEPOD Overlay Districts Eliminated 2018
- Spring Annual Town Meeting Article 18 / Multifamily Overlay District approved April 8, 2024

BOURNE

Maintained by The Dept. of
Public Works Engineering Division

